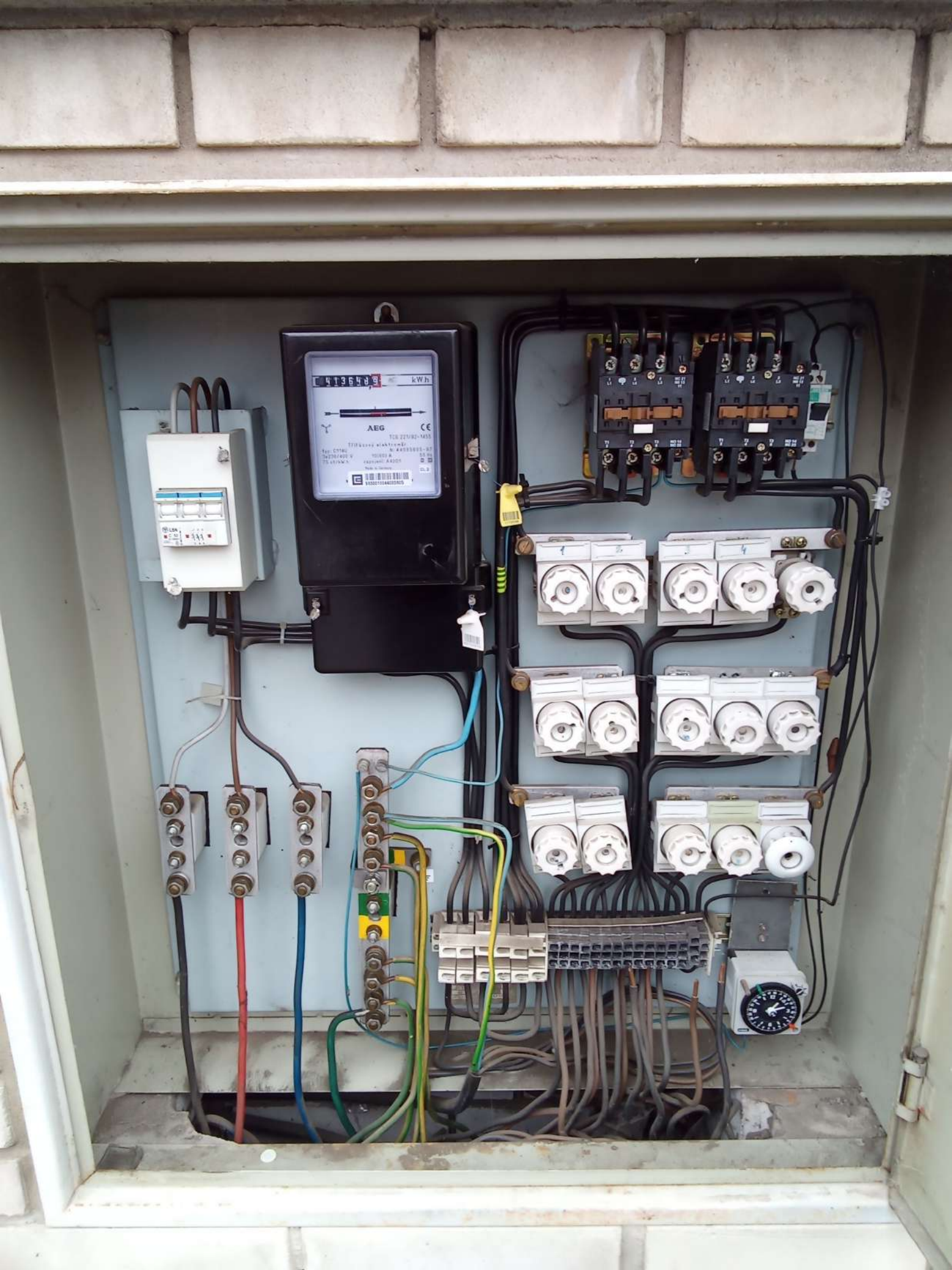


RV012



RVO 1 - rekonstrukce



413648 kWh

AEG CE

TOR 227192-1433

TIKKAUVA KÄÄNTÖKÄYTTÖ

Typ. C1740 W. A4013003-01

14230/400 V 10000 A 50 Hz

TS VUONNA JÄRJESTÄJÄ AEG

Made in Germany Cl. 3

9302014400040

REL LON

1 2 3

4 5 6

0 1 2 3 4 5 6 7 8 9 10 11 12 13 14 15 16 17 18 19 20 21 22 23 24 25 26 27 28 29 30 31 32 33 34 35 36 37 38 39 40 41 42 43 44 45 46 47 48 49 50 51 52 53 54 55 56 57 58 59 60 61 62 63 64 65 66 67 68 69 70 71 72 73 74 75 76 77 78 79 80 81 82 83 84 85 86 87 88 89 90 91 92 93 94 95 96 97 98 99 100



4 1 3 6 4 8 9 kW.h



AEG



TCS 221/92-1455

Třífázový elektroměr

typ: C114U

N: 44085605-97

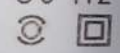
3x230/400 V

10(60) A

50 Hz

75 ot/kW.h

zapojení: A4001



Made in Germany

CL.2



9630010044085605

7573.01 07-00

1 L1 3 L2 5 L3 NC 21 NO 13 11

T1 2 T2 4 T3 6 NO 14 NC 22

1L0744

1 L1 3 L2 5 L3 NC 21 NO 13 11

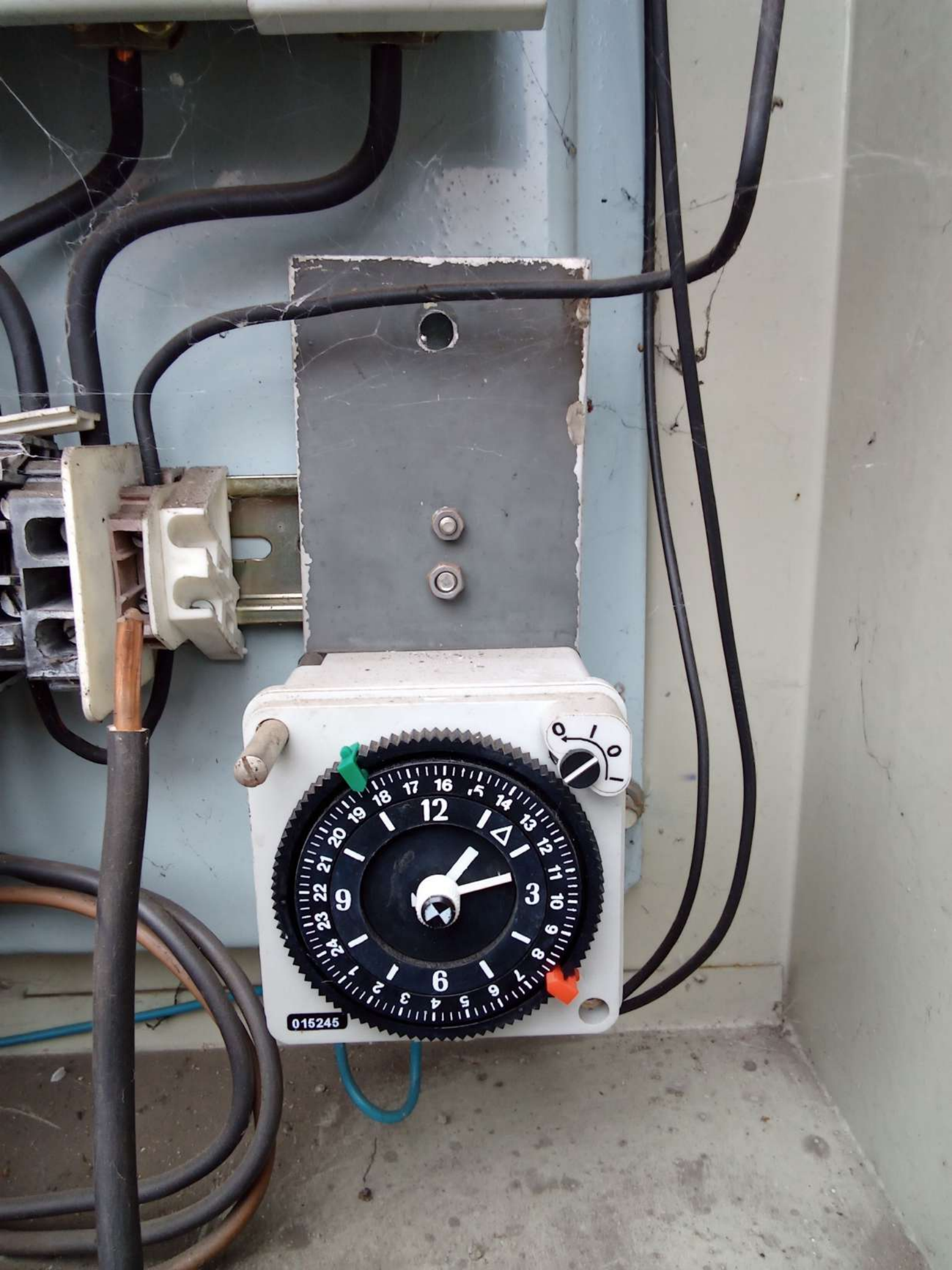
T1 2 T2 4 T3 6 NO 14 NC 22

1L0744

BEYER
16A

AUTO 13
0 -11
HAND -12
-14

1 2 3 4



RVO 7



RVO 7

1 L1 3 L2 L3

FA 01 FA 02 FA 03

SCHRACK B2/1

OVLADÁNÍ SVĚTLO ZÁSUVKA

0 RUCHE SPINACĚ SPINACÍ HODINY

SCHRACK SH1

71

F 01 F 02 F 03 F 04

L 1 L 1 L 1 L 1

L 2 L 2 L 2 L 2

L 3 L 3 L 3 L 3

FA 01 FA 02

SCHRACK
B 2 / 1
AM618102
MCB
230V~ 6000A

SCHRACK
B 2 / 1
AM618102
MCB
230V~ 6000A

SCHRACK
B 10 / 1 N I_{an} 0,03A
AK668610
RCBO
230V~ I_{an} 6000A

I-ON I-ON I-ON

1 2 3 4

2 1 2 3 4

OVLÁDÁNÍ SVĚTLO ZÁSUVKA

L1 L2 L3

T1 T2 T3 T4

6

1 2 3 4

2 1 2 3 4

0

RUČNĚ SEPNUTO

SPÍNACÍ HODINY

FA 01

0
RUČNĚ
MINUTO
SPÍNACÍ HODINY
SOUVRÁK SPÍNAČ

SOU-1
Un
1 LUX
2 TEST
LEVEL [Lux] min max
DELAY 0 2min
ELKO

SCHRACK BZT27131-A
Tempus Analog quartz 250
Made in Germany 1810872
SH 1

Z 1

1 5 22 1 22



Třífázový elektroměr

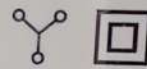
11



00000000 kWh
L1 L2 L3 T2

Naměřená
hodnota energie

Aktivní tarif T1 T2



9041061074102452
ZE312.D0B1T022-010



0,15-5(80)A
-40/+70°C
No.1074102452



3×230/400V 50Hz
10 000 imp./kWh
100 imp./kWh
TCM 221/09-4694
Cl.A 11/11
Rok 2011

CE M11 1383



HLAVNÍ JISTIČ

BT62B

2 4 0
1 2 3 4

MCB
~400V

10000
[3]

BM018340CZ
B 40/3-CZ
SCHRACK

U2 V2 W2

Terminal block with 6 terminals and 4 screws, connected to yellow and green cables.

10
27

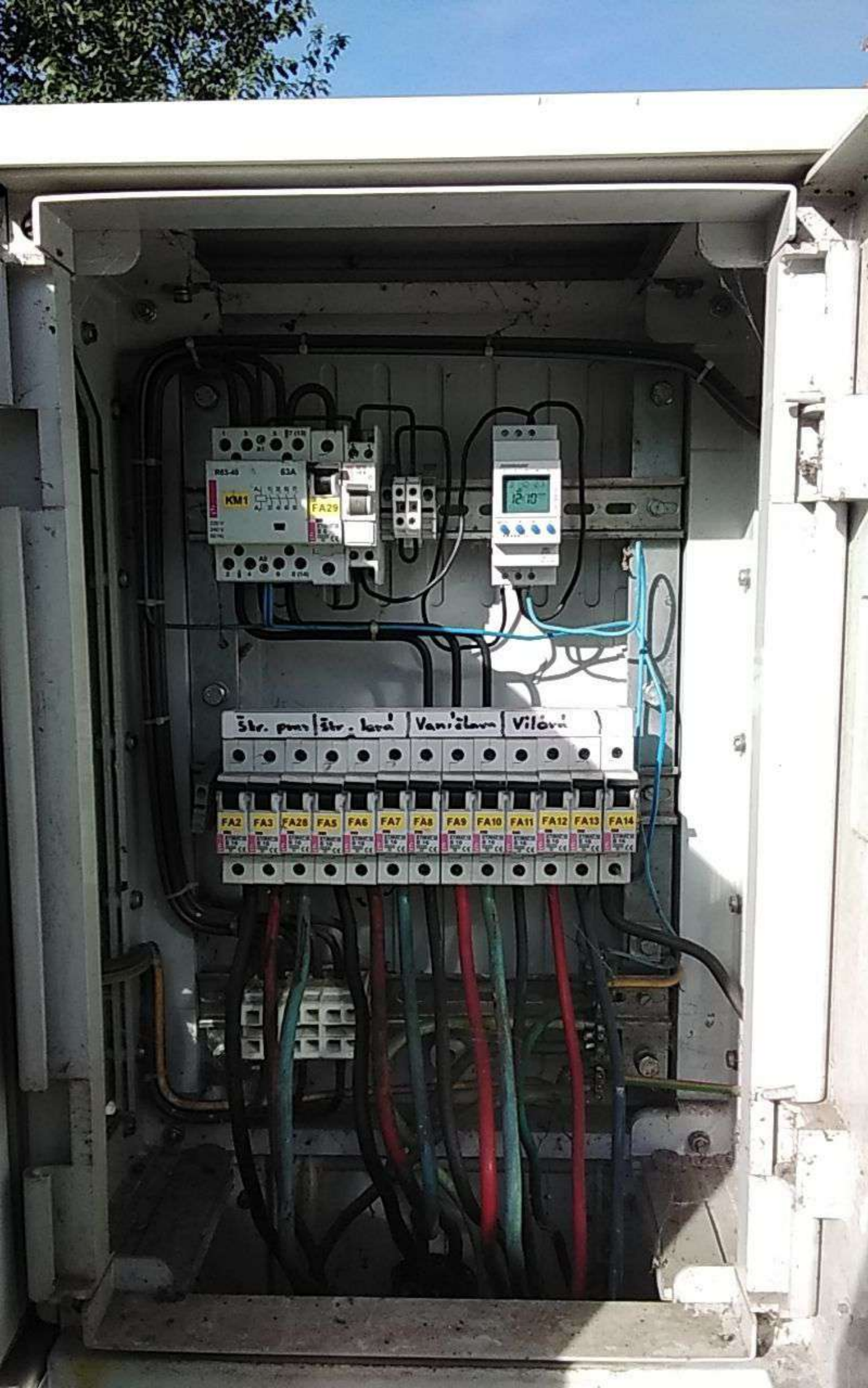


RVO 9



11
Aktivni tarif T1 T2
E-MAIL: info@elektrika.cz
TEL: 22198-8844
FAX: 22198-8845

RVO.C.9

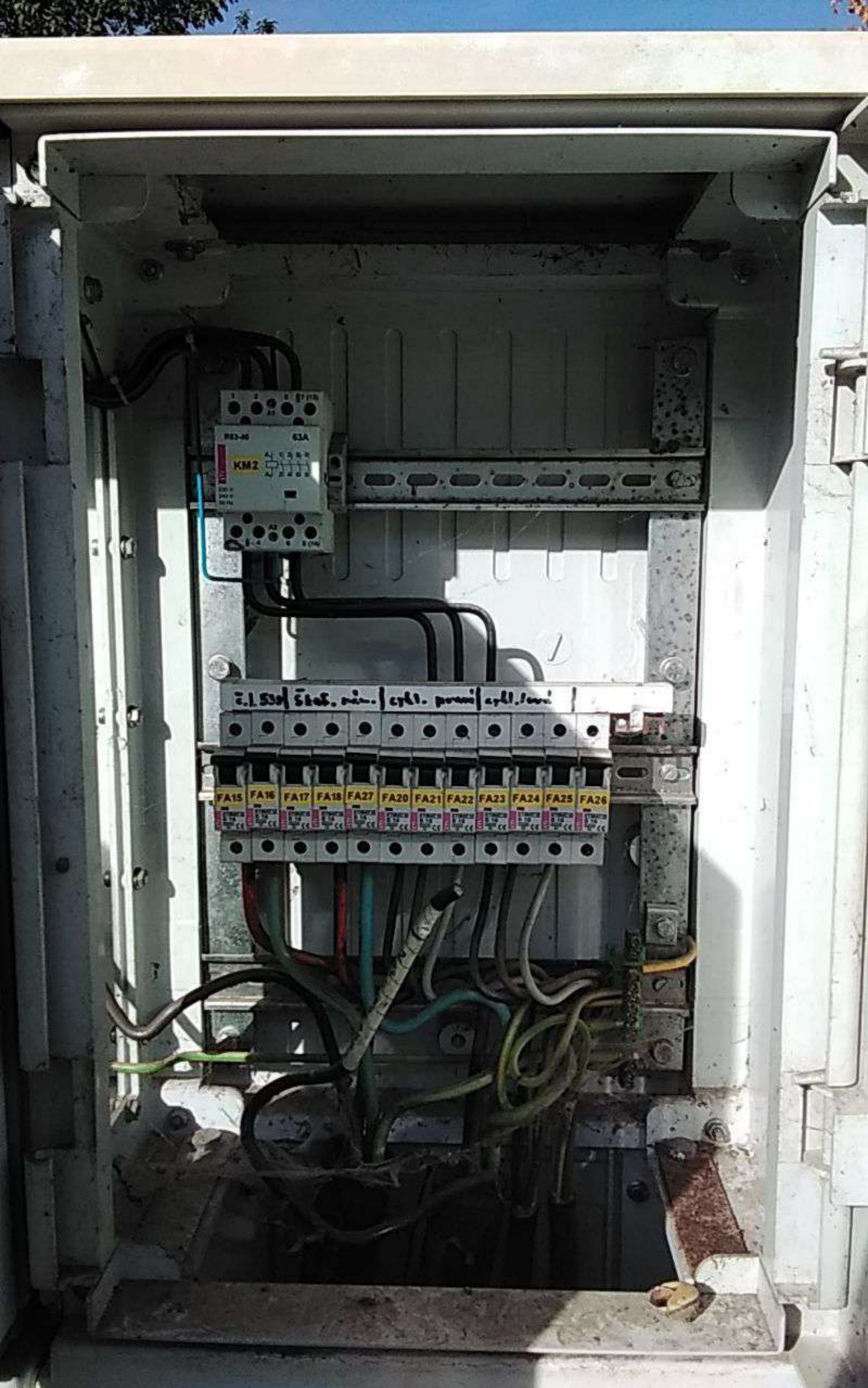


R63-40 63A
KM1
FA29

12.10

Štr. pmt | Štr. kora | Vanjšlav | Vilová

FA2 FA3 FA28 FA5 FA6 FA7 FA8 FA9 FA10 FA11 FA12 FA13 FA14



RE3-40 63A
KM2
A1 1 2 3 4
A2 5 6 7 8
A3 9 10 11 12

Э.Л.539 | 5 каб. пав. | 4 каб. прамі | 4 каб. лаві

FA15 FA16 FA17 FA18 FA27 FA20 FA21 FA22 FA23 FA24 FA25 FA26



RVO 13 - rekonstrukce



86A





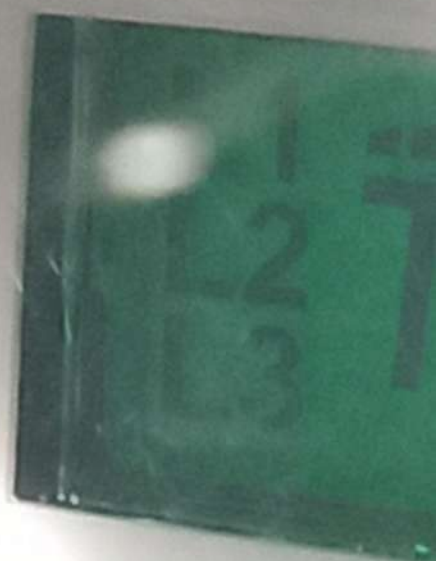
9041071570308139

 **daisy**
TECHNOLOGY

SNo 1570308139

Systemova chyba
1 2 Aktivni

Zatit





1071570308139

daisy
TECHNOLOGY
SNo 1570308139



F - Systémová chyba
T1..2 - Aktivní tarif 1..2 [kWh]

ADX10-AD-U2H-V2X-G1-OK1

CE **M15** 1432

TCM 221/10 - 4781

10000 imp/kWh \sqcup 1000 imp/kWh



cl. A M1 3K6



3X230 / 400 V, 0.15 - 5(80)A, 50Hz

Rok výroby : 2015

-33°C to +60°C
(mezí rozsah provozu)

15

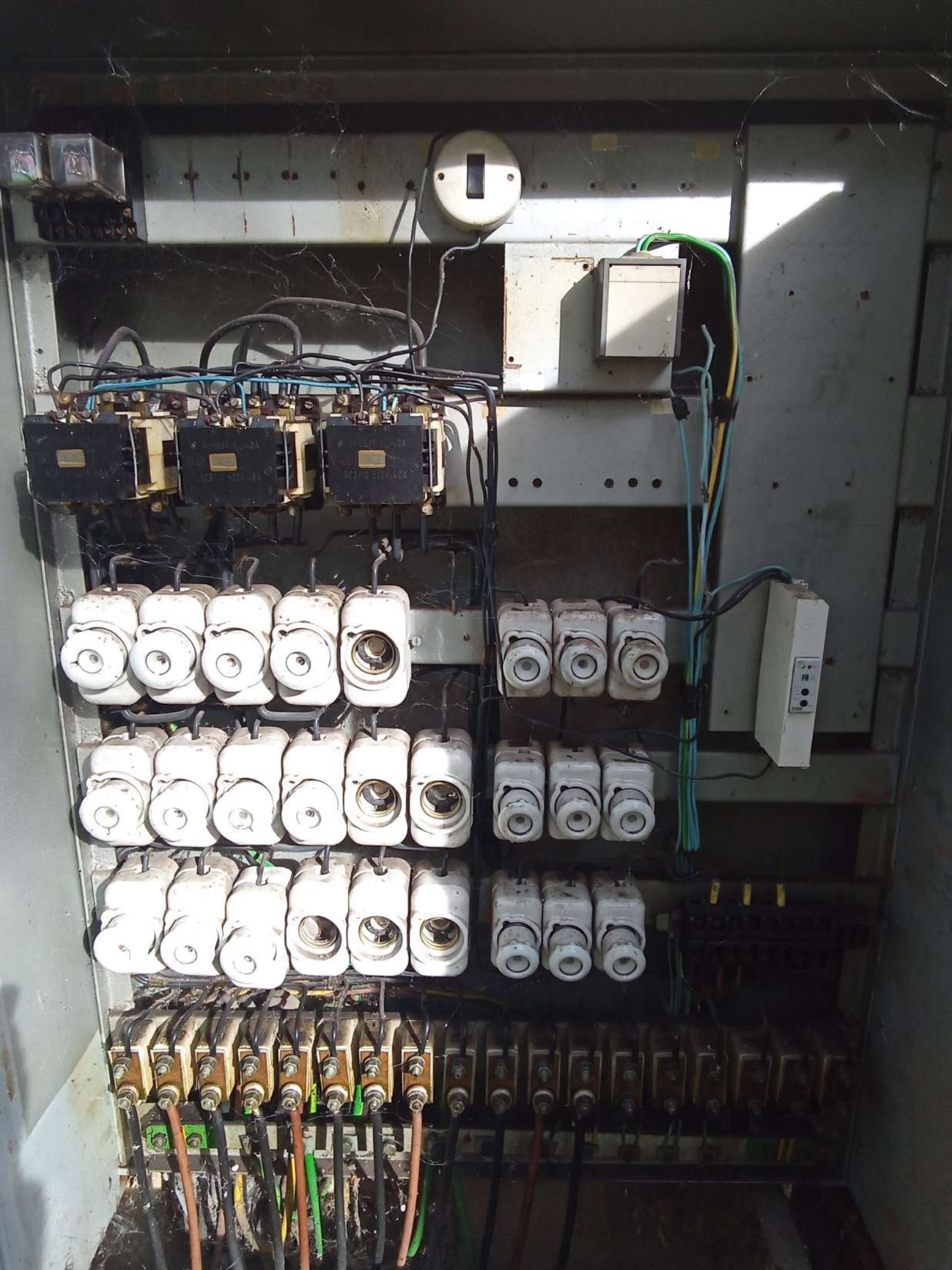
Funkce

E2 Procházet

P R T T1



86A





SQU-1

Lin   

1  LUX
2  TEST

LEVEL
[Lx]  min max

DELAY
 0 2min

ELKO



RVO 16 - rekonstrukce





9041171780045723



v.č. 1780045723

F - Systémová chyba

T1_2 - Aktivní tarif 5.2 [kWh]

ADX12A-AD-U2H-V2C-G1-0

CE **M17** 1432

TCM 221/16 - 5350

10000 imp
11100 imp



c.l. A M1 3K7 E2

3X230 / 400 V, 0.25 - 5



Rok výroby : 2017



12398182





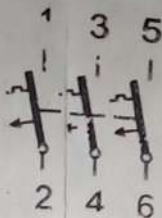
LST

TEST

B 80

AC 230/400 V

10 000



DELCON®

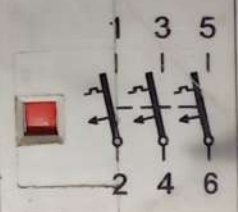


LSN



C 50
AC 230/400 V

6 000





SCHRACK

0 6 12 18 24

25.10.23
12:11

BTM0511A

MENU ← → OK

10-60°C
100-200V
100W 200V



600 0
230/400V 3
C45N/1
B101
Kania
EN60898
B S CE

4238

CE
230/400V
B101
Kania
EN60898
B S CE



HTH

RVO-19



RVO 19



72i OV

Control panel with a red emergency stop button and a digital display.

Central window with a green display.

Terminal block with multiple ports.

Terminal block with multiple ports.

Small label with technical specifications.



RLC. OV.

✓



Z

Třífázový elektroměr



Aktivní tarif T1 T2



ZE314.D0B1B012-001

3×230/400V 50Hz 0,15-5(80)A Cl. A



9041161022884442

No. 1022884442

Rok 2017



-40/+70°C

10 000 imp./kWh

100 imp./kWh

CE M17 1383

TCM 221/14-5143



HTH Energo s.r.o.



Pražská 585

430 01 CHOMUTOV

tel.: 474610906

Výroba rozvaděčů CE

V.Č. 340/2008

IP 43/40

TYP: DCEP, 2^u

U = 3x400/230V 50Hz

ČSN EN 60439-1

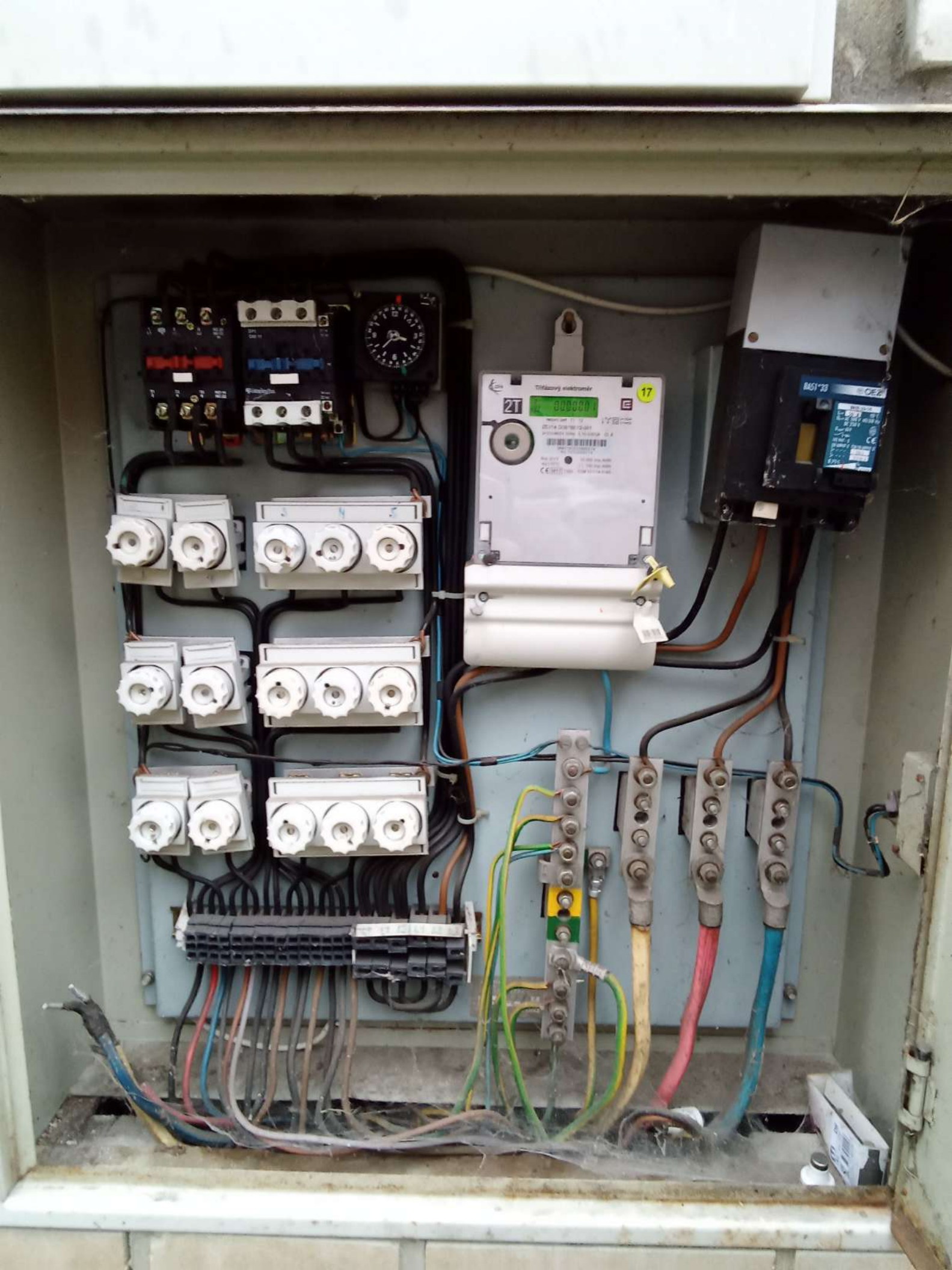
I = 10A



RVO22



RVO 22 - rekonstrukce



Terminal block with a pressure gauge. The gauge has a scale from 0 to 12. The terminal block has several terminals with wires connected to them.

Digital meter with a green display showing '000000'. The meter has a label with '21' and '17' and some technical specifications. It is connected to a white terminal block below it.

Black relay with a blue label. The label has 'R451' and 'CE' and some technical specifications. It is connected to several wires.

Three rows of white terminal blocks. Each row has two 2-terminal blocks and one 3-terminal block. Wires are connected to the terminals.

Four vertical terminal blocks with wires connected to them. The wires are colored yellow, green, red, and blue. The terminal blocks are mounted on a metal surface.

Black terminal block with many terminals. Wires are connected to the terminals.

Bundle of wires entering the panel from the bottom left. The wires are colored blue, red, brown, and black.





Třífázový elektroměr

17

2T

T2 L1 L2 L3
 18.2 0000000 kWh



Aktivní tarif T1 T2

ZE314.D0B1B012-061

3x230/400V 50Hz 0,15-5(80)A Cl. A



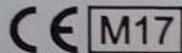
9041161022888274
No.1022888274

Rok 2017
-40/+70°C



10 000 imp./kWh

100 imp./kWh



M17

1383

TCM 221/14-5143



BA51*33

OEZ

BA51-33-50

$I_n = 50 \text{ A}$ 40 °C

$U_n = \text{AC } 500 \text{ V } 40/60 \text{ Hz}$
DC 250 V

$U_{imp} = 6 \text{ kV}$



IEC 947 - 2

EN 60947-2

ČSN EN 60947-2

250 A

37.5-50 A

0,75 I_n

I_n

No. 44120004

OEZ
5

PRVO





SIEMENS Landis & Gyr MM2000
6 5 4 3 7 4 kWh 12
TCM 221 / 93-1842
MM2600x15 No. 73 931 017
3x230/400 V 10(60) A 50 Hz
75 r/kWh C1.2 2000
E 8830258073331817 4 331 3429 1

66942469



ny
kycPi
IP42

Price
Lamp

SIEMENS

Landis & Gyr MM2000

6 5 4 3 7 4 9 kWh

12

TCM 221 / 93-1642

U

MM2600xf6
3x230/400 V
75 r/kWh

No. 73 931 017
10(60) A
Cl.2

50 Hz
2000



9830250073931017

4 331 3429 1

66942469



LSN



C 63

AC 230/400 V

6 000





IN IN

SOU-1

U_n ● ●

1 LU TEST

2.5

LEVEL [Lx] min max

DELAY 0 2min

116 18

OEZ LETOHRAD
S440 AC1 40A 500V~
ČSN EN 60947-4-1 VDE0660

OEZ LETOHRAD
S440 AC1 40A 500V~
ČSN EN 60947-4-1 VDE0660

4.OKRUH

2.OKRUH

3.OKRUH

1.OKRUH

GEYER
BC 120 BD
230-400
B20!

LSN
C 20
AC 230/400 V

LSN
C 20
AC 230/400 V

LSN
C 20
AC 230/400 V

LSN
C 20
AC 230/400 V

LSN
C 20
AC 230/400 V

LSN
C 20
AC 230/400 V

LSN
C 20
AC 230/400 V

LSN
C 20
AC 230/400 V

LSN
C 20
AC 230/400 V

LSN
C 20
AC 230/400 V

LSN
C 20
AC 230/400 V



RVO 31

Třířákový elektroměr

2T

17

Aktivní tarif T1 T2

ZE314.D0B1B012-061

3x230/400V 50Hz 0,15-5(80)A Cl. A

9041161022802195

No. 1622802195

Rok 2017 10 000 imp./kWh

-40/+70°C J.L. 100 imp./kWh

CE M17 1383 TCM 221/14-5143

HLAVNÍ JISTIČ

FA1

V2 V2 V2



Třífázový elektroměr

17

2T



Aktivní tarif T1 T2



ZE314.D0B1B012-061

3x230/400V 50Hz 0,15-5(80)A Cl. A



9041161022802195
No.1022802195

Rok 2017
-40/+70°C



10 000 imp./kWh
100 imp./kWh



M17

1383

TCM 221/14-5143



HLAVNÍ JISTIČ

FA1

ETIMAT P10
B 63
10000



U2

V2

W2

2





FA2

FA3

FA4

FA5

FA6

FA7

FA11

FA12

FA13

ETIMAT 10
B 16
10000
D
CE

ETIMAT 10
B 16
10000
D
CE

ETIMAT 10
B 16
10000
D
CE

ETIMAT 10
B 16
10000
D
CE

ETIMAT 10
B 16
10000
D
CE

ETIMAT 10
B 16
10000
D
CE

ETIMAT 10
B 16
10000
D
CE

ETIMAT 10
B 16
10000
D
CE

ETIMAT 10
B 16
10000
D
CE

MAN



MAN

FA2

FA3

FA4

FA5

FA6

FA7

FA11

FA12

ETIMAT 10
B 16
10000
CE

ETIMAT 10
B 16
10000
CE

ETIMAT 10
B 16
10000
CE

ETIMAT 10
B 16
10000
CE

ETIMAT 10
B 16
10000
CE

ETIMAT 10
B 16
10000
CE

ETIMAT 10
B 16
10000
CE

ETIMAT 10
B 16
10000
CE

KM1

220V A₁ 1 | 3 | 5 | 7
240V A₁ 2 | 4 | 6 | 8
50Hz A₁ 2 | 4 | 6 | 8

ETI R25-40
25A

KM2

220V A₁ 1 | 3 | 5 | 7
240V A₁ 2 | 4 | 6 | 8
50Hz A₁ 2 | 4 | 6 | 8

ETI R25-40
25A

KM3

220V A₁ 1 | 3 | 5 | 7
240V A₁ 2 | 4 | 6 | 8
50Hz A₁ 2 | 4 | 6 | 8

ETI R25-40
25A

KM4

220V A₁ 1 | 3 | 5 | 7
240V A₁ 2 | 4 | 6 | 8
50Hz A₁ 2 | 4 | 6 | 8

ETI R25-40
25A

KM5

220V A₁ 1 | 3 | 5 | 7
240V A₁ 2 | 4 | 6 | 8
50Hz A₁ 2 | 4 | 6 | 8

ETI R25-40
25A

KM6

220V A₁ 1 | 3 | 5 | 7
240V A₁ 2 | 4 | 6 | 8
50Hz A₁ 2 | 4 | 6 | 8

ETI R25-40
25A

MAN

KM6

220V A₁ 1 | 3 | 5 | 7 |
240V
50Hz A₂ 2 | 4 | 6 | 8 |

R25-40
25A

QM1

SSQ 125
25A
~230V

SCHRACK

0 6 12 18 24

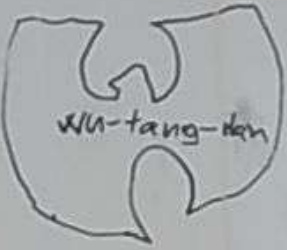
5 10 20
off
10:31
3

BZT18D011A

MENU MENU OK
C1

AUT

RVO 33



RVO 33



RVO 33



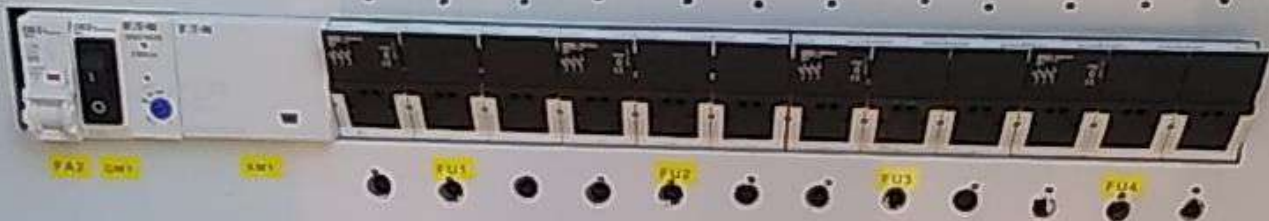
N

PRES SILNICI A K. JPU

DO 1683 A DAL

DO 1693 A DAL DO CHELARSKE

PRES SILNICI DO 1691 A 1690



DO 1682 A K. LP

DO 1599 PANELAK POD KOPCEN

NA BLATENSKOU DESITKY

DOLU DO H. PUPANOVE A VROHLICEHO

